

PNÖMATİK YÖN DENETİM VALFİ

PNEUMATIC DIRECTIONAL CONTROL VALVE

ELECTRICALLY ACTUATED VALVES BOBİNLİ VALFLER



SV - 1/4 -

Ölçü / Connection	Yol Sayısı Number of ways	Konum Sayısı Number of positions	Geri Geliş Şekli Return Actuation Type	Bobin Tipi Solenoid Type	Bobin Gerilimi Voltage Type
G 1/4"	3	2	B Bobin / Solenoid	Dik / Vertical	12 V DC
	5	3	H Hava Uyarı Air impulse	Y Yatık / Horizontal	24 V DC
			Y Yay / Mechanical spring	A Normalde Açık Normally open	24 V AC
					110 V AC
					220 V AC
			Uyarı Şekli Actuation Type		
			B Bobin / Solenoid	E A-B Egzoza Açık A-B Exhaust open	

TEKNİK ÖZELLİKLER / TECHNICAL SPECIFICATIONS

Çalışma Basıncı / Operating Pressure Range : 1-3 . . . 10 bar

Debi / Flow Rate (6 bar) : 990 NI / dak. / NI/min.

Çalışma sıcaklığı / Temperature Range : -10 . . . +80 °C

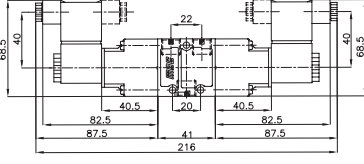
Çalışma ortamı / Medium : Filtre edilmiş kuru ve yağlı hava / Lubricated or unlubricated filtered compressed air.

* Üç konum ve egzoz açığı seçenekleri beş yollu valfler için geçerlidir / Three positions and exhaust open options are available for five ways valves.

SV-1/4-3/2

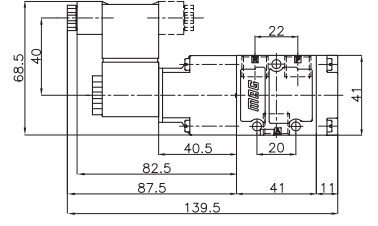
Yatık Bobinli Valf Horizontal type solenoid

SV-1/4-3/2-B-B-Y



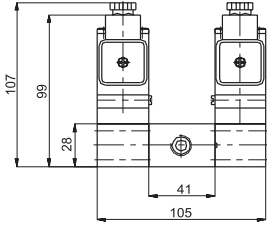
Simge / Symbol	Tip / Type	Çalışma Basıncı (bar) Operating Pressure Range (bar)	Ağırlık (g) Weight (g)
	SV-1/4-3/2-B-B-Y	1....10	397
	SV-1/4-3/2-B-Y-Y	3....10	265
	SV-1/4-3/2-B-Y-Y-A	3....10	265

SV-1/4-3/2-B-Y-Y



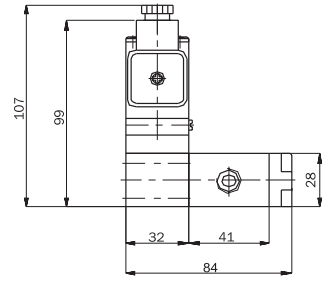
Dik Bobinli Valf Vertical type solenoid

SV-1/4-3/2-B-B

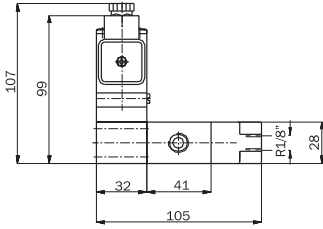


Simge / Symbol	Tip / Type	Çalışma Basıncı (bar) Operating Pressure Range (bar)	Ağırlık (g) Weight (g)
	SV-1/4-3/2-B-B	1....10	1075
	SV-1/4-3/2-B-H	1....10	780
	SV-1/4-3/2-B-Y	3....10	650
	SV-1/4-3/2-B-Y-A	3....10	650

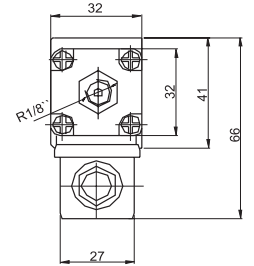
SV-1/4-3/2-B-Y



SV-1/4-3/2-B-H



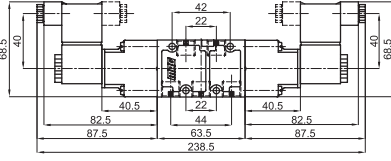
Bobin Kapağının Üstten Görünüşü
Upside view for solenoid cover



SV-1/4-5/2

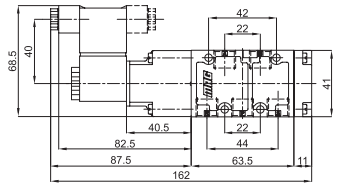
Yatık Bobinli Valf Horizontal type solenoid

SV-1/4-5/2-B-B-Y

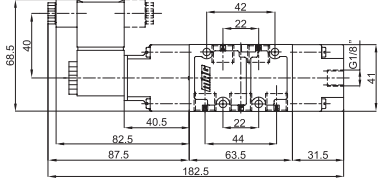


Simge / Symbol	Tip / Type	Çalışma Basıncı (bar) Operating Pressure Range (bar)	Ağırlık (g) Weight (g)
	SV-1/4-5/2-B-B-Y	1....10	447
	SV-1/4-5/2-B-Y-Y	3....10	314
	SV-1/4-5/2-B-H-Y	1....10	480

SV-1/4-5/2-B-Y-Y

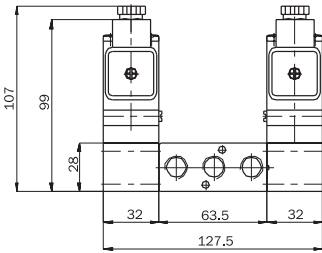


SV-1/4-5/2-B-H-Y

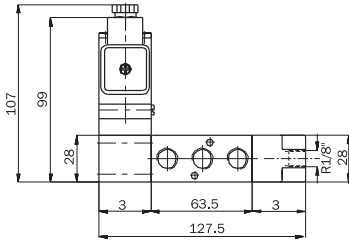


Dik Bobinli Valf Vertical type solenoid

SV-1/4-5/2-B-B

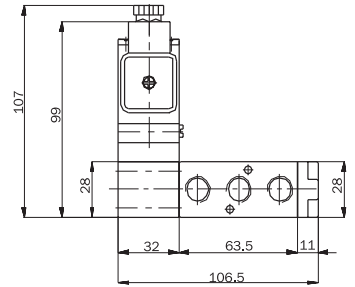


SV-1/4-5/2-B-H



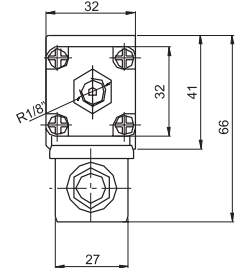
Simge / Symbol	Tip / Type	Çalışma Basıncı (bar) Operating Pressure Range (bar)	Ağırlık (g) Weight (g)
	SV-1/4-5/2-B-B	1.....10	1380
	SV-1/4-5/2-B-H	1.....10	1035
	SV-1/4-5/2-B-Y	3....10	680

SV-1/4-5/2-B-Y



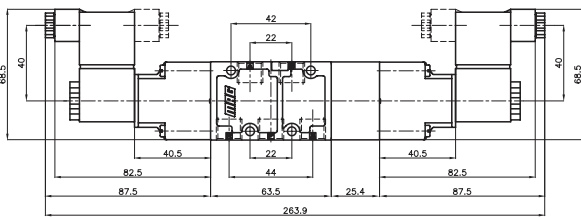
Bobin Kapağının Üstten Görünüşü

Upside view for solenoid cover



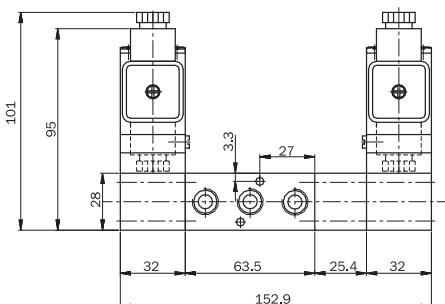
SV-1/4-5/3

Yatık Bobinli Valf / Horizontal type solenoid



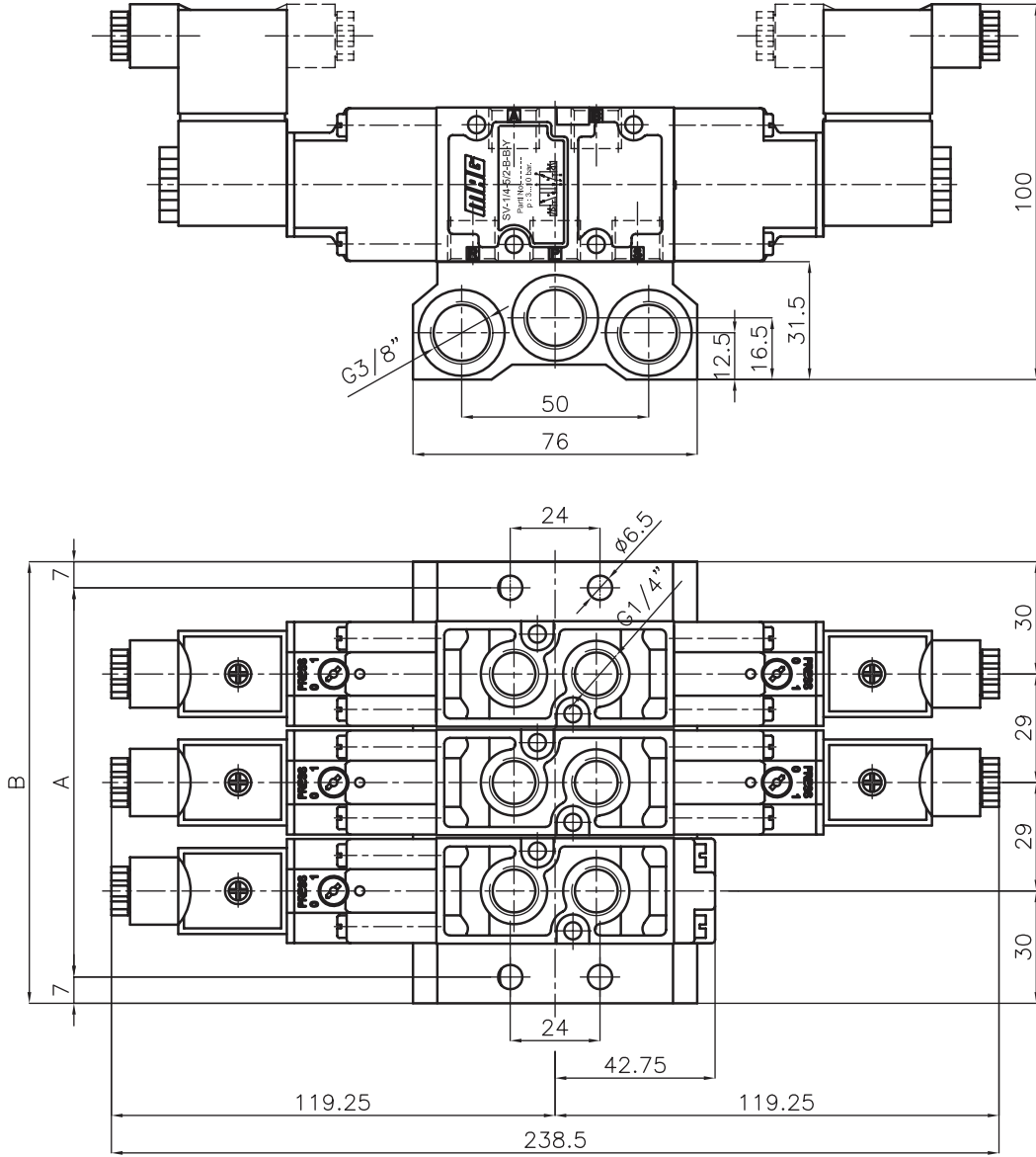
Simge / Symbol	Tip / Type	Çalışma Basıncı (bar) Operating Pressure Range (bar)	Ağırlık (g) Weight (g)
	SV-1/4-5/3-B-B-Y	3....10	560
	SV-1/4-5/3-B-B-Y-E	3....10	560

Dik Bobinli Valf / Vertical type solenoid



Simge / Symbol	Tip / Type	Çalışma Basıncı (bar) Operating Pressure Range (bar)	Ağırlık (g) Weight (g)
	SV-1/4-5/3-B-B	3....10	1400
	SV-1/4-5/3-B-B-E	3....10	1400

SV - 1/4 VALF ADASI ÖLÇÜLERİ / VALVE ISLAND DIMENSIONS



SİPARİŞ ŞEKLİ ⁽¹⁾
ORDER INSTRUCTIONS

SVP - 1/4 - . . .

Valf Sayısı / Number of valves

Valf Sayısı Number of valves	A	B
2	75	89
3	104	118
4	133	147
5	162	176
6	191	205
7	220	234
8	249	263
9	278	292
10	307	321

(1) BU ADA TİPİ BEŞ YOLLU İKİ KONUMLU VE BEŞ YOLLU ÜÇ KONUMLU VALF TİPLERİ İÇİN GEÇERLİDİR.

(1) This valve island is suitable for only 5 position - 2 way and 3 way valves.