



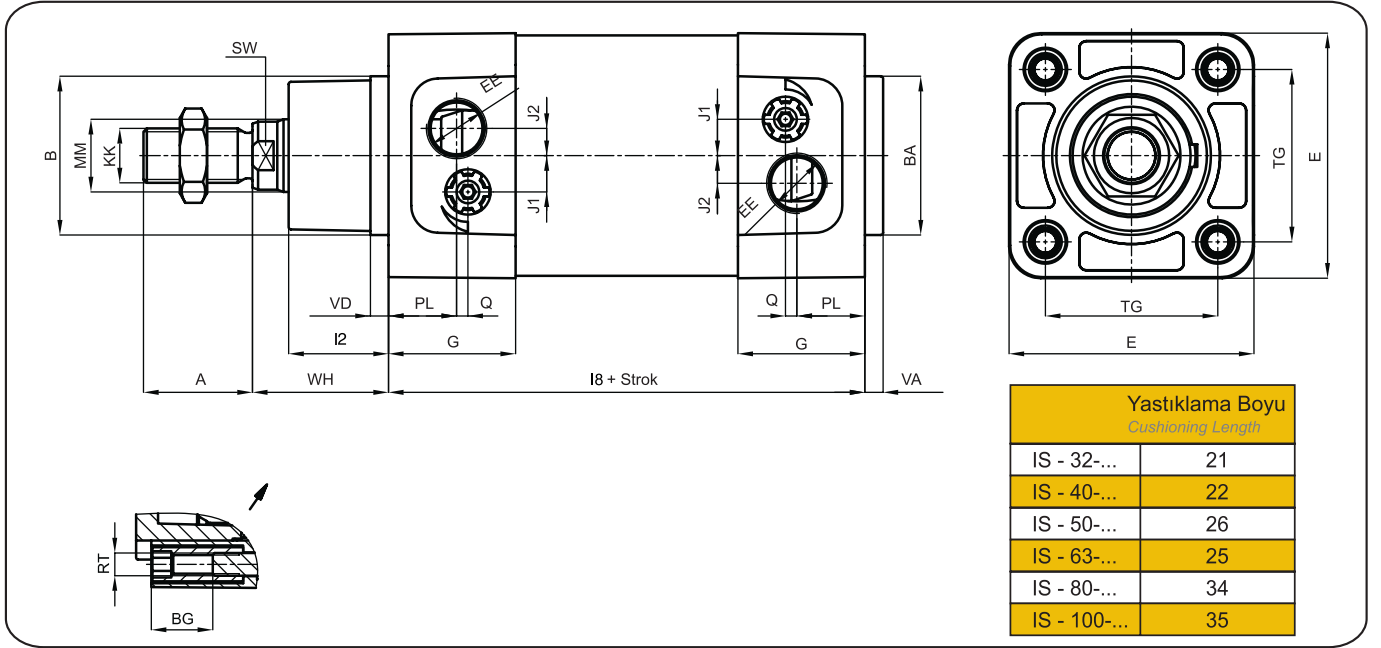
(ISO 15552 STANDARDI)
(ISO 15552 Standard)



IS

Silindir Kodu Cylinder Code	Piston Çapı Piston Diameter	Standart Strok Standard Strokes	Bağlantı Şekli / Mountings		Piston Kolu Malzemesi Piston Rod Material	
Çift Etkili / Double acting	32	50, 100, 160, 200, 300, 400, 500	IAB	Ayak Bağlantı / Foot mounting	Ck 45 Krom kaplı Ck 45 chrome plated piston rod	
Yastıklı Double acting with cushioning	40		IAEBK	Küresel Arka Eklem Bağlantı Rear swivel flange mounting with spherical bearing	S X20Cr13 Krom kaplı X20Cr13 chrome plated piston rod	
Manyetik / Magnet	50		IFB	Flanş Bağlantı / Flange mounting	NBR + PU sızdırmazlık elemanı NBR + PU Seal Çalışma sıcaklığı Temperature Range : -20°C ~ +80°C	
	63		IEB	Eklem Bağlantı / Swivel flange mounting		V Viton sızdırmazlık elemanı Viton Seal Çalışma sıcaklığı Temperature Range : -30°C ~ +200°C
	80		IEYB	Eklem Yer Bağlantı Swivel flange mounting with clevis foot		
	100		IÇB	Çatal Bağlantı / Piston rod clevis mounting		
		IOEB	Orta eklem bağlantı Trunnion mounting			

Ölçüler / Dimensions



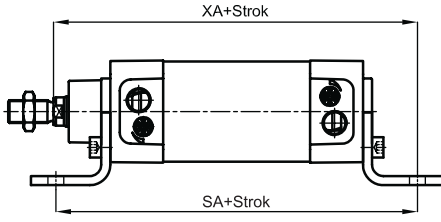
	A -2	AB H14	AH JS16	AO	AT	AU ±0.2	B/BA d11	BG	BR	BT	CB H14	CD H9	CK H9	CL H9	CM	CX H7	D H11	E	EE	EM -0.2 -0.6	EP
IS-32	22	7	32	6	4 ^{±0.3}	24	30	16	10	8	26	10	10	10	10	10	30	45	G1/8	26	10.5
IS-40	24	10	36	9	4 ^{±0.3}	28	35	16	11	10	28	12	12	12	12	12	35	54	G1/4	28	12
IS-50	32	10	45	10	5 ^{±0.3}	32	40	16	13	12	32	12	12	16	16	16	40	64	G1/4	32	15
IS-63	32	10	50	12	5 ^{±0.3}	32	45	16	15	12	40	16	16	16	16	16	45	75	G3/8	40	15
IS-80	40	12	63	15	6 ^{±0.5}	41	45	18	15	14	50	16	16	20	20	20	45	93	G3/8	50	18
IS-100	40	14	71	17	6 ^{±0.5}	41	55	17	19	15	60	20	20	20	20	20	55	110	G1/2	60	18

	EX ±0.1	F	FB H13	FE	FG	FL ±0.2	G	GL JS14	H	HB H13	I2	I8	J1	J2	KK	L +1	L1 ±1	L2 ±0.5	L3	L4 ±0.5	L5
IS-32	14	40	7	12	20	22	27	21	20	7	18	94 ^{±0.4}	5	6	M10x1.25	12	5.5	5	4	5.5	-
IS-40	16	48	9	14	24	25	28	24	24	7	22	105 ^{±0.7}	6	8	M12x1.25	15	5.5	5	4	5.5	-
IS-50	21	64	9	19	32	27	30	33	32	9	26	106 ^{±0.7}	6.85	9.15	M16x1.5	16	6.5	5	5	6.5	51
IS-63	21	64	9	19	32	32	35	37	32	9	28	121 ^{±0.8}	9.7	10.8	M16x1.5	21	6.5	5	5	6.5	-
IS-80	25	80	12	25	40	36	37.5	47	40	11	31	128 ^{±0.8}	9.5	12	M20x1.5	22	7	5	8	10	75
IS-100	25	80	14	25	40	41	40	55	40	11	35	138 ^{±1}	14	12.5	M20x1.5	27	7	5	6	10	-

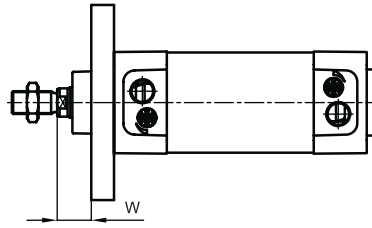
	L7	MF JS14	MM	MR	MS	PL	PH JS15	R JS14	RA JS14	RT	R1 min.	R2 H15	R3	Q	SA	SW	TD e9	TE JS14	TF JS14	TG	TK
IS-32	32.5	10	12	11	16	13	32	32	18	M6	12	15	0.5	2	142 ^{±1.25}	10	12	38	64	32.5 ^{±0.5}	18
IS-40	31.5	10	16	13	18	15	36	36	22	M6	14	17.5	0.5	2.5	161 ^{±1.25}	13	16	41	72	38 ^{±0.5}	22
IS-50	37	12	20	13	21	15	45	45	30	M8	19	20	0.8	3	170 ^{±1.25}	17	16	50	90	46.5 ^{±0.6}	22
IS-63	36	12	20	17	23	17	50	50	35	M8	19	22.5	0.8	3.5	185 ^{±1.6}	17	20	52	100	56.5 ^{±0.7}	28
IS-80	48	16	25	17	28	20.5	63	63	40	M10	24	22.5	1.5	3.5	210 ^{±1.6}	22	20	66	126	72 ^{±0.7}	30
IS-100	53	16	25	21	30	22	71	75	50	M10	24	27.5	1.5	4	220 ^{±1.6}	22	25	76	150	89 ^{±0.7}	40

	TL h14	TM h14	TR JS14	UB h14	UF	UL	UR	UW	XA	XD	XN	XVmin	XVmax	VA -1	VD	W	WH	ZF
IS-32	12	50	32	45	80	51	31	60	144 ^{±1.25}	142 ^{±1.25}	142 ^{±1.25}	62	84	4	4	16 ^{±1.6}	26 ^{±1.4}	130 ^{±1.25}
IS-40	16	63	36	52	90	54	35	70	163 ^{±1.25}	160 ^{±1.25}	160 ^{±1.25}	69	96	4	4	20 ^{±1.6}	30 ^{±1.4}	145 ^{±1.25}
IS-50	16	75	45	60	110	65	45	84	175 ^{±1.25}	170 ^{±1.25}	170 ^{±1.25}	78	102	4	4	25 ^{±1.6}	37 ^{±1.4}	155 ^{±1.25}
IS-63	20	90	50	70	120	67	50	98	190 ^{±1.6}	190 ^{±1.6}	190 ^{±1.6}	86	109	4	4	25 ^{±2}	37 ^{±1.8}	170 ^{±1.6}
IS-80	20	110	63	90	150	86	60	120	215 ^{±1.6}	210 ^{±1.6}	210 ^{±1.6}	98.5	121.5	4	4	30 ^{±2}	46 ^{±1.8}	190 ^{±1.6}
IS-100	25	132	75	110	175	96	70	138	230 ^{±1.6}	230 ^{±1.6}	230 ^{±1.6}	111	129	4	4	35 ^{±2}	51 ^{±1.8}	205 ^{±1.6}

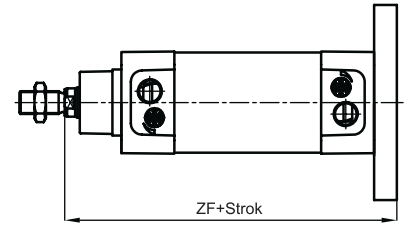
Bağlantı şekilleri / Mountings types



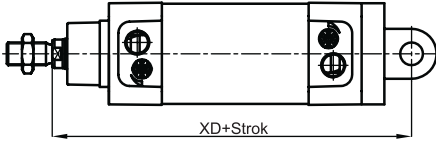
Ayak bağlantı
Foot mounting



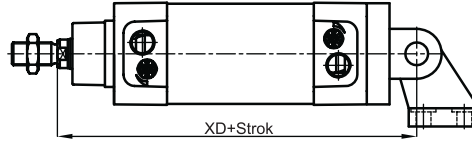
Ön flanş bağlantı
Front flange mounting



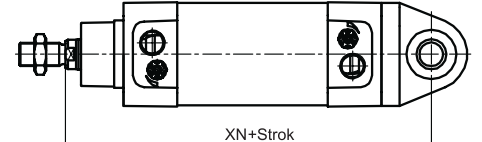
Arka flanş bağlantı
Rear flange mounting



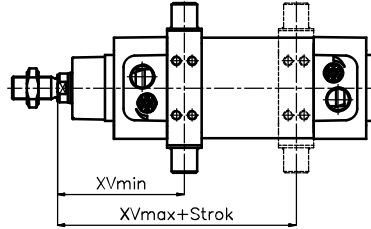
Eklem bağlantı
Swivel flange mounting



Eklem yer bağlantı
Swivel flange mounting with clevis foot

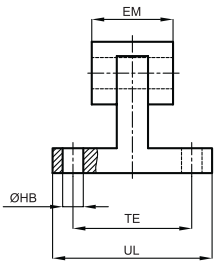


Küresel Arka Eklem bağlantı
Rear swivel flange mounting with spherical bearing

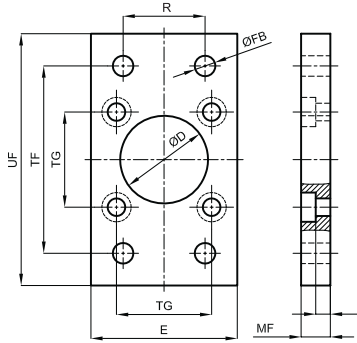
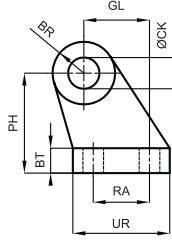


Orta eklem bağlantı
Trunnion mounting

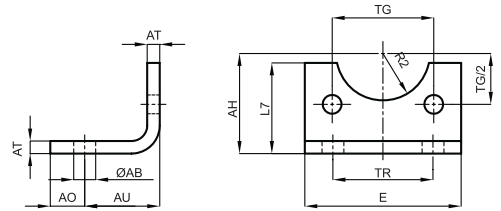
Bağlantı parçaları / Mountings



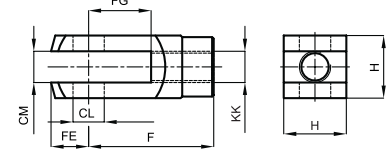
IYB: Yer bağlantı
Clevis foot



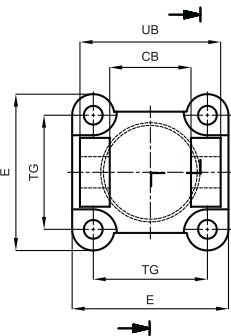
IFB: Flanş bağlantı
Flange mounting



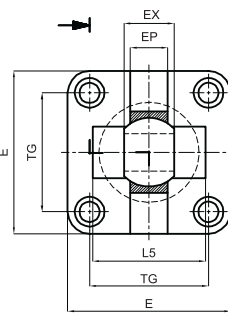
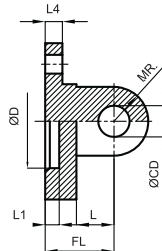
IAB: Ayak bağlantı
Foot mounting



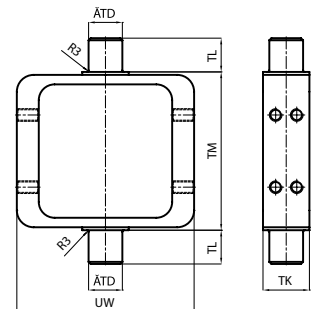
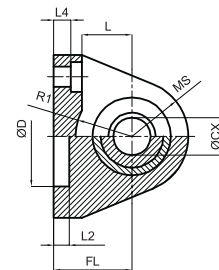
IÇB: Çatal Bağlantı
Piston rod clevis mounting



IEB: Eklem bağlantı
Swivel flange mounting

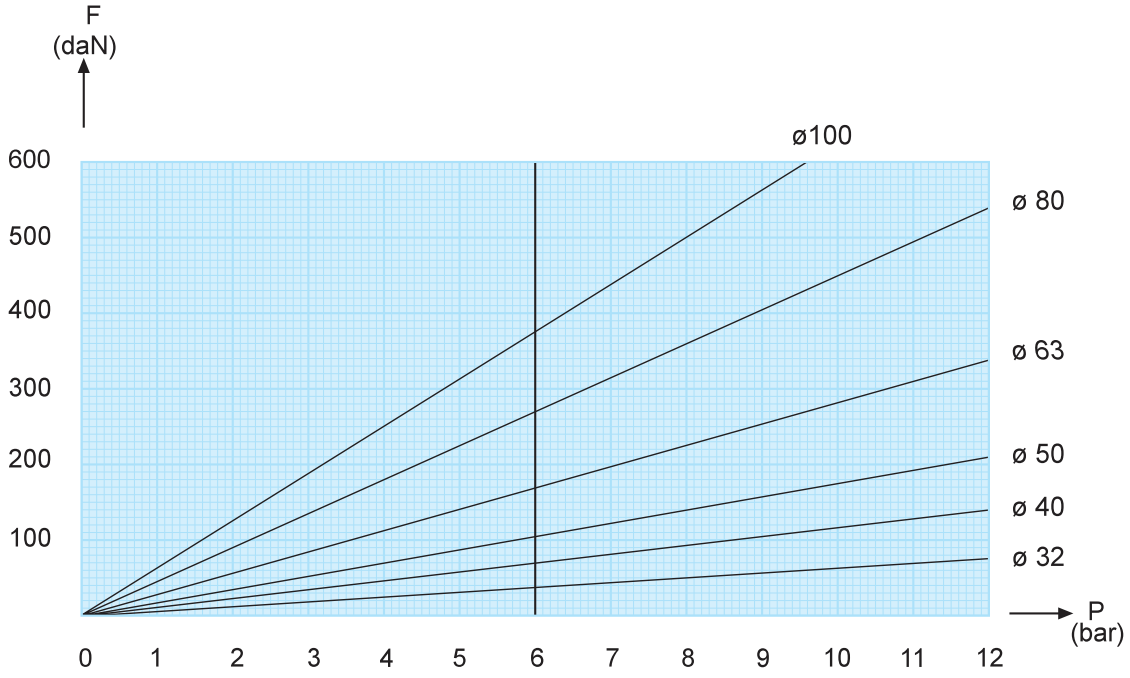


IAEBK: Küresel arka eklem bağlantı
Rear swivel flange mounting with spherical bearing



IOEB: Orta eklem bağlantı
Trunnion mounting

İtme kuvveti / Compression force : (daN)



$$F = p \times A - R$$

F : itme kuvveti / compression force (daN)
p : basınç / pressure (bar)
A : alan / area (cm)²
R : sürtünme kuvveti / friction force (daN)

Ağırlık / Weight : (kg)

Silindir Çapı Piston diameter (Ø mm)	Strok=0 At 0 Stroke (kg)	Her 10 mm. strok için Weight per 10 mm. stroke	IAB	IFB	IEB	IYB	IAEBKI	IOEB	ÇB
32	0.550	0.030	0.065	0.060	0.075	0.060	0.070	0.154	0.088
40	0.900	0.040	0.075	0.085	0.135	0.085	0.106	0.296	0.144
50	1.366	0.054	0.165	0.160	0.165	0.145	0.191	0.403	0.296
63	1.750	0.065	0.190	0.210	0.285	0.210	0.238	0.748	0.296
80	2.902	0.093	0.370	0.470	0.460	0.340	0.439	1.089	0.690
100	3.740	0.098	0.480	0.660	0.785	0.515	0.585	2.013	0.690