

PNÖMATİK YÖN DENETİM VALFİ PNEUMATIC DIRECTIONAL CONTROL VALVE

MECHANICALLY ACTUATED VALVES MEKANİK UYARILI VALFLER



SV - 1/4 -

Ölçü Connection
G 1/4"

Yol Sayısı Number of ways
3
5

Konum Sayısı Number of positions
2
3

Uyarı Şekli Actuation Type	
D	Düğme / Push button
H	Hava Uyarı Air impulse
K	Kol / Lever
M	Makara / Cam
P	Pedal

Geri Geliş Şekli Return Actuation Type	
H	Hava Uyarı / Air impulse
Y	Yay / Mechanical spring
M	Makara / Cam
O	Uyarı Şekli Aynı Same as actuation type

TEKNİK ÖZELLİKLER / TECHNICAL SPECIFICATIONS

Çalışma Basıncı / Operating Pressure Range : -1...0...12 bar

Debi / Flow Rate (6 bar) : 990 NI / dak. / NI/min.

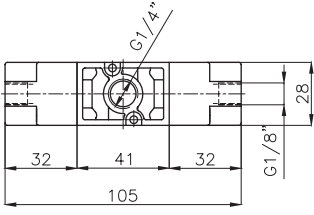
Çalışma sıcaklığı / Temperature Range : -10 . . . +80 °C

Çalışma ortamı / Medium : Filtre edilmiş kuru ve yağlı hava / Lubricated or unlubricated filtered compressed air.

SV-1/4-3/2

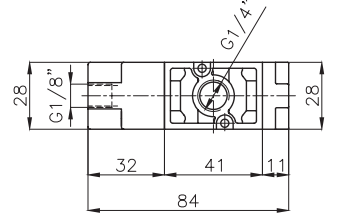
Hava Uyarılı Valf Air impulse operated valve

SV-1/4-3/2-H-H



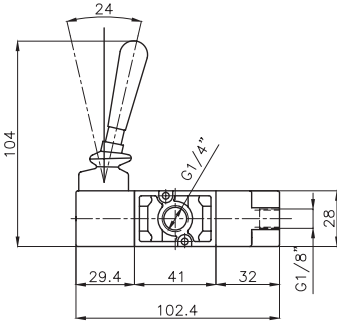
Simge / Symbol	Tip / Type	Çalışma Basıncı (bar) Operating Pressure Range (bar)	Ağırlık (g) Weight (g)
	SV-1/4-3/2-H-H	1....12	460
	SV-1/4-3/2-H-Y	3....12	280

SV-1/4-3/2-H-Y



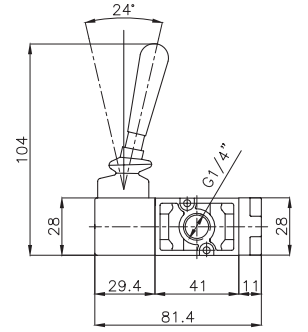
Kollu Valf Lever operated valve

SV-1/4-3/2-K-H



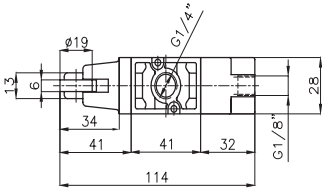
Simge / Symbol	Tip / Type	Çalışma Basıncı (bar) Operating Pressure Range (bar)	Ağırlık (g) Weight (g)
	SV-1/4-3/2-K-H	1....12	460
	SV-1/4-3/2-K-Y	-1...0....12	280
	SV-1/4-3/2-K-O	-1...0....12	350

SV-1/4-3/2-K-Y ve
SV-1/4-3/2-K-O



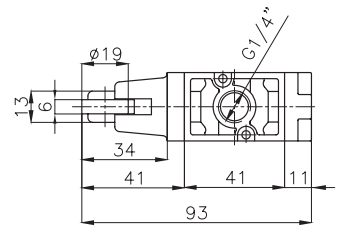
Makaralı Valf Cam operated valve

SV-1/4-3/2-M-H

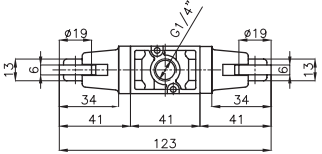


Simge / Symbol	Tip / Type	Çalışma Basıncı (bar) Operating Pressure Range (bar)	Ağırlık (g) Weight (g)
	SV-1/4-3/2-M-H	1....12	360
	SV-1/4-3/2-M-M	-1...0....12	260
	SV-1/4-3/2-M-Y	-1...0....12	200

SV-1/4-3/2-M-Y

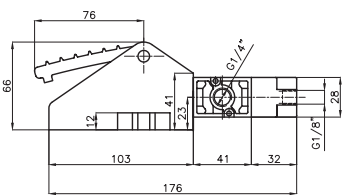


SV-1/4-3/2-M-M



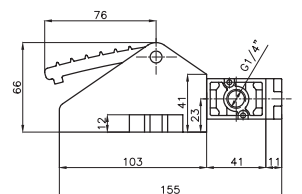
Pedallı Valf Pedal operated valve

SV-1/4-3/2-P-H

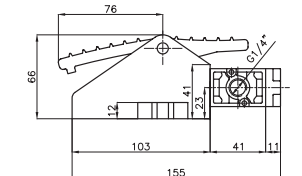


Simge / Symbol	Tip / Type	Çalışma Basıncı (bar) Operating Pressure Range (bar)	Ağırlık (g) Weight (g)
	SV-1/4-3/2-P-H	1....12	1470
	SV-1/4-3/2-P-Y	-1...0....12	1335
	SV-1/4-3/2-P-O	-1....0....12	1430

SV-1/4-3/2-P-Y



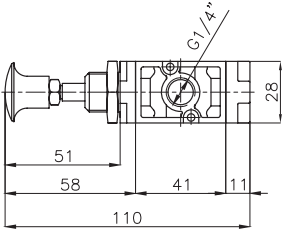
SV-1/4-3/2-P-O



Düğmeli Valf

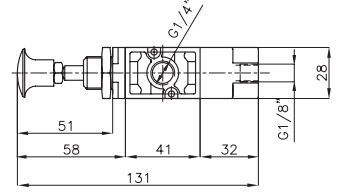
Push button operated valve

SV-1/4-3/2-D-O

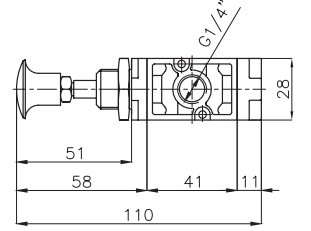


Simge / Symbol	Tip / Type	Çalışma Basıncı (bar) Operating Pressure Range (bar)	Ağırlık (g) Weight (g)
	SV-1/4-3/2-D-H	1...12	380
	SV-1/4-3/2-D-Y	-1...0..12	210
	SV-1/4-3/2-D-O	-1...0..12	205

SV-1/4-3/2-D-H



SV-1/4-3/2-D-Y

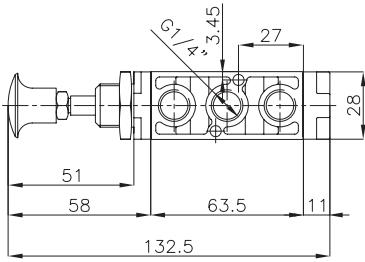


SV - 1/4 - 5/2

Düğmeli Valf

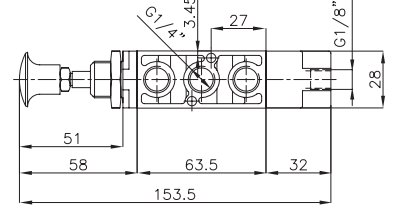
Push button operated valve

SV-1/4-5/2-D-O

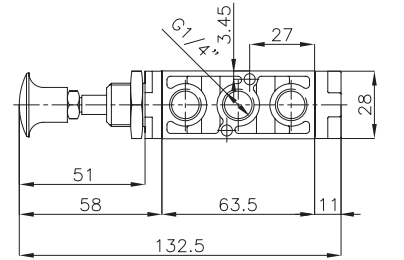


Simge / Symbol	Tip / Type	Çalışma Basıncı (bar) Operating Pressure Range (bar)	Ağırlık (g) Weight (g)
	SV-1/4-5/2-D-H	1...12	615
	SV-1/4-5/2-D-Y	-1...0..12	255
	SV-1/4-5/2-D-O	-1...0..12	255

SV-1/4-5/2-D-H



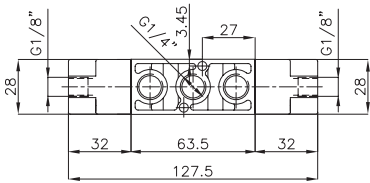
SV-1/4-5/2-D-Y



Hava Uyarılı Valf

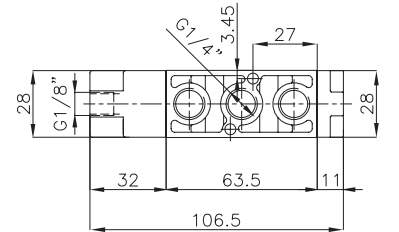
Air impulse operated valve

SV-1/4-5/2-H-H



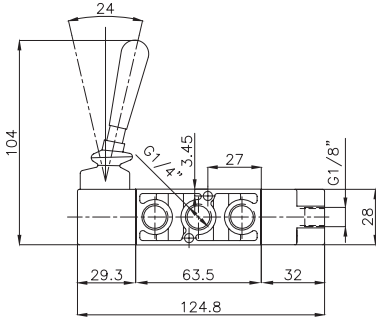
Simge / Symbol	Tip / Type	Çalışma Basıncı (bar) Operating Pressure Range (bar)	Ağırlık (g) Weight (g)
	SV-1/4-5/2-H-H	1...12	520
	SV-1/4-5/2-H-Y	3...12	354

SV-1/4-5/2-H-Y



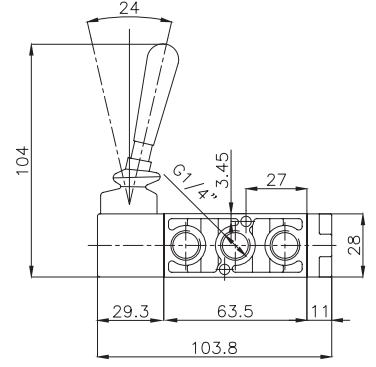
Kollu Valf
Lever operated valve

SV-1/4-5/2-K-H



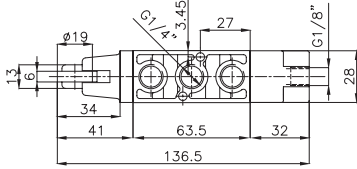
Simge / Symbol	Tip / Type	Çalışma Basıncı (bar) Operating Pressure Range (bar)	Ağırlık (g) Weight (g)
	SV-1/4-5/2-K-H	1...12	561
	SV-1/4-5/2-K-Y	-1...0...12	395
	SV-1/4-5/2-K-O	-1...0...12	395

SV-1/4-5/2-K-Y ve
SV-1/4-5/2-K-O

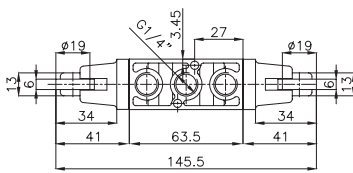


Makaralı Valf
Cam operated valve

SV-1/4-5/2-M-H

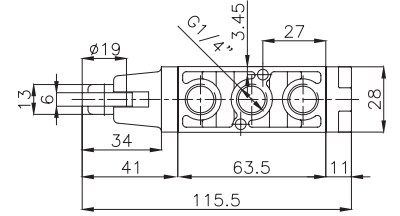


SV-1/4-5/2-M-M



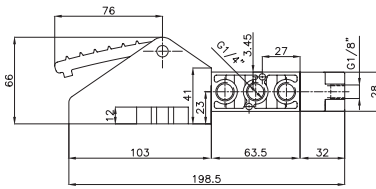
Simge / Symbol	Tip / Type	Çalışma Basıncı (bar) Operating Pressure Range (bar)	Ağırlık (g) Weight (g)
	SV-1/4-5/2-M-H	1...12	615
	SV-1/4-5/2-M-M	-1...0...12	515
	SV-1/4-5/2-M-Y	-1...0...12	260

SV-1/4-5/2-M-Y



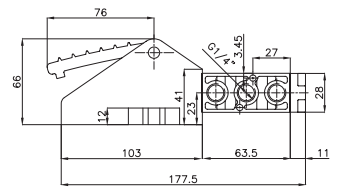
Pedallı Valf
Pedal operated valve

SV-1/4-5/2-P-H

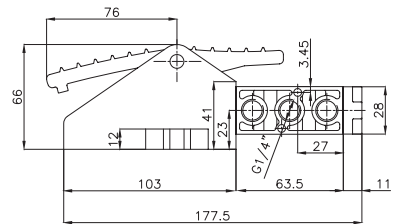


Simge / Symbol	Tip / Type	Çalışma Basıncı (bar) Operating Pressure Range (bar)	Ağırlık (g) Weight (g)
	SV-1/4-5/2-P-H	1...12	1780
	SV-1/4-5/2-P-Y	-1...0...12	1495
	SV-1/4-5/2-P-O	-1...0...12	1420

SV-1/4-5/2-P-Y



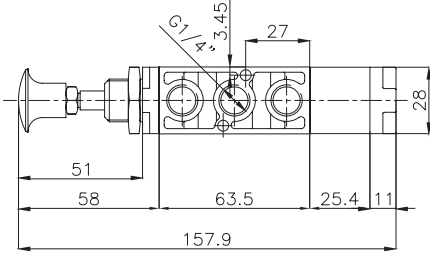
SV-1/4-5/2-P-O



SV - 1/4 - 5/3

Düğmeli Valf

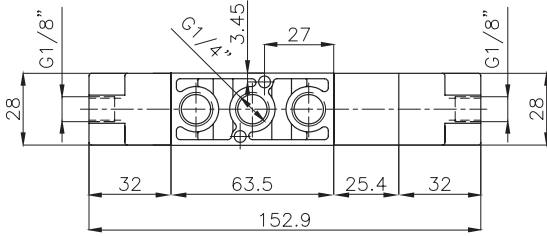
Push button operated valve



Simge / Symbol	Tip / Type	Çalışma Basıncı (bar) Operating Pressure Range (bar)	Ağırlık (g) Weight (g)
	SV-1/4-5/3-D-Y	-1..0..12	390

Hava Uyarılı Valf

Air impulse operated valve

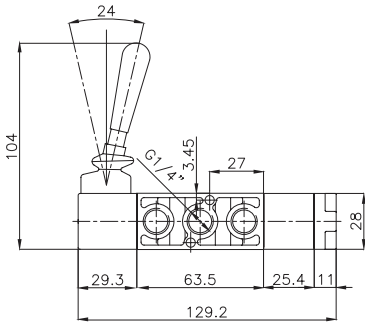


Simge / Symbol	Tip / Type	Çalışma Basıncı (bar) Operating Pressure Range (bar)	Ağırlık (g) Weight (g)
	SV-1/4-5/3-H-H	3.....12	600

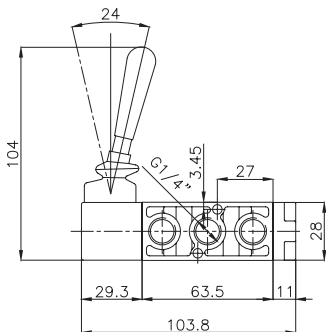
Kollu Valf

Lever operated valve

SV-1/4-5/3-K-Y



SV-1/4-5/3-K-O

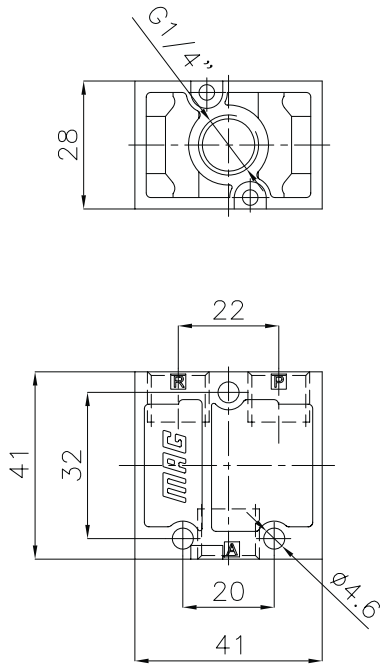


Simge / Symbol	Tip / Type	Çalışma Basıncı (bar) Operating Pressure Range (bar)	Ağırlık (g) Weight (g)
	SV-1/4-5/3-K-Y	-1..0..12	480
	SV-1/4-5/3-K-O	-1..0..12	394

SV-1/4-3/2-.....

Gövdesi

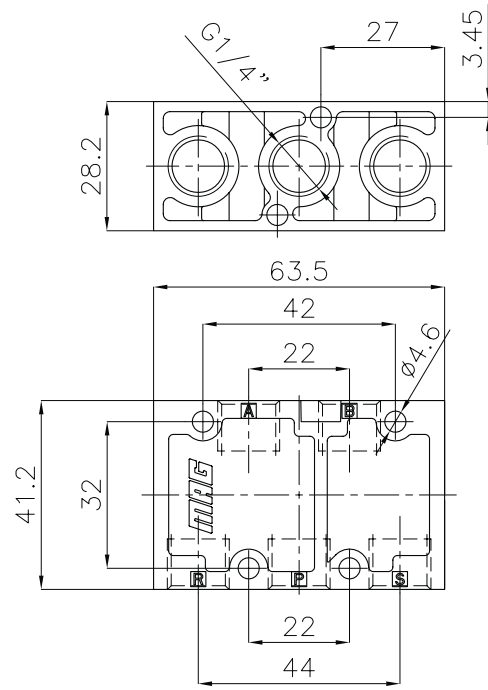
Main Body Dimensions



SV-1/4-5/2-.....

Gövdesi

Main Body Dimensions



SV - 1/4 - ile elde edilen piston hızı eğrisi

Piston speed graph formed by using SV - 1/4

