

ALUMİNYUM PROFİLLİ PNÖMATİK SİLİNDİR

ALUMINUM PROFILE PNEUMATIC CYLINDER

CYLINDERS SİLİNDİRLER



(CETOP RP 43P'ye uygun)
(according to CETOP RP 43P)

NS

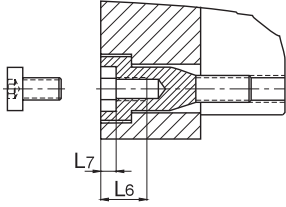
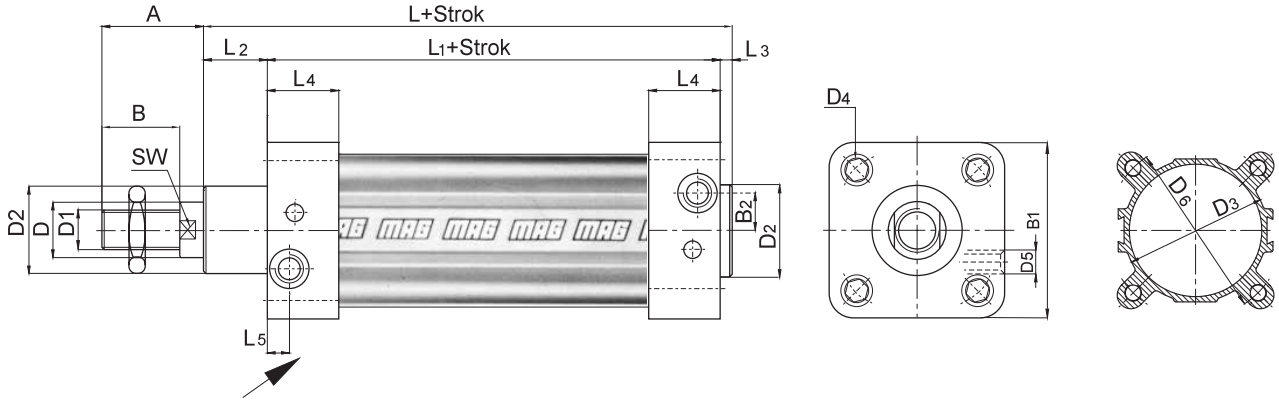
Silindir Kodu / Cylinder Code	
ANS	Çift Etkili / Double acting
ANSY	Çift Etkili Yastıklı Double acting with cushioning
ANST	Tek Etkili / Single acting
MNSY	Çift Etkili Manyetik Yastıklı Double acting with cushioning and magnetic
MNS	Çift Etkili Manyetik Double acting and magnetic

Piston Çapı Piston Diameter
32,40,50,63, 80,100

Standart Strokler Standart Strokes
50,100,160,200 300,400,500

Bağlantı Şekli / Mountings	
AB	Ayak Bağlantı / Foot mounting
FB	Flanş Bağlantı / Flange mounting
EB	Eklem Bağlantı / Swivel flange mounting
EYB	Eklem Yer Bağlantı Swivel flange mounting with clevis foot
ÇB	Çatal Bağlantı / Piston rod clevis mounting

Ölçüler / Dimensions

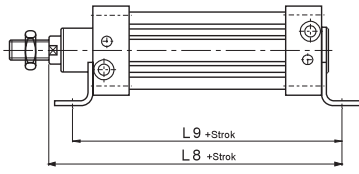


Yastıklama Boyu Cushioning Length	
ANS - 32 - ...	19
ANS - 40 - ...	21
ANS - 50 - ...	23
ANS - 63 - ...	23
ANS - 80 - ...	30
ANS - 100 - ...	30

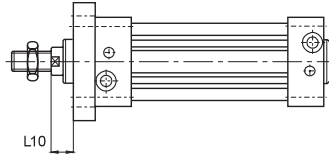
TEKNİK ÖZELLİKLER / TECHNICAL SPECIFICATIONS	
Silindir Gövdesi / Cylinder Tube	Alüminyum / Aluminum
Silindir Kapakları / Cylinder End Caps	Al. Enjeksiyon Döküm / Aluminum
Piston Mili / Piston Rod	CK 45 Krom Kaplı / CK 45 Chrome Plated
Sızdırmazlık Elemanları / Seals	NBR, Viton
Boğaz Keçesi / Rod Seal	Poliüretan / Polyurethane
Piston Keçesi / Piston Seal	NBR
O-Ring / O - Rings	NBR
Max. Çalışma Basıncı Max. Operating Pressure	10 BAR
Çalışma Sıcaklığı Temperature Range	-20°C, +80°C

	A	B	B ₁	B ₂	B ₃	B ₄	B ₅	B ₆	B ₇	C	C ₁	C ₂	C ₃	C ₄	D ø	D ₁	D ₂ ø	D ₃ ø	D ₄	D ₅
ANS-32-...	30	20	45	0	32	45	26	54	10	4	10	8	8	20	12	M10x1.25	30	37	M5	G 1/8"
ANS-40-...	34	24	54	4.5	36	52	28	62	12	5	10	9	10	24	16	M12x1.25	35	45	M5	G 1/4"
ANS-50-...	44	32	65	5.5	45	60	32	70	16	6	12	11	12	32	20	M16x1.5	40	55	M6	G 1/4"
ANS-63-...	44	32	80	13	50	70	40	82	16	6	15	12	12	32	20	M16x1.5	42	68	M6	G 3/8"
ANS-80-...	54	40	96	16	63	90	50	102	20	8	18	14	14	40	25	M20x1.5	48	86	M8	G 3/8"
ANS-100-...	53	40	126	16	75	110	60	126	20	8	18	15	15	40	25	M20x1.5	55	108	M8	G 1/2"

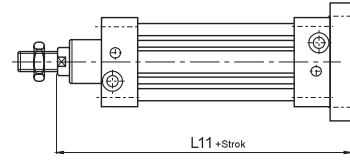
	D ₆ ø	D ₇ ø	D ₈ ø	D ₉ ø	D ₁₀ ø	D ₁₁ ø	D ₁₂ ø	E	E ₁	E ₂	E ₃	E ₄	E ₅	E ₆	E ₇	E ₈	E ₉	F	F ₁	F ₂	H
ANS-32-...	46	7	10	10	5.5	18	10	32	24	22	18	31	38	51	40	52	32	77	64	5.7	32
ANS-40-...	56	9	12	10	5.5	22	12	38	28	25	22	35	41	54	48	62	38	90	72	5.7	36
ANS-50-...	68	9	12	11	6.6	28	16	42	32	27	30	45	50	65	64	83	51	110	90	6.8	45
ANS-63-...	84	9	16	11	6.6	28	16	50	35	35	35	50	52	67	64	83	51	125	100	6.8	50
ANS-80-...	100	12	16	15	9	36	20	60	43	38	40	60	66	86	80	105	65	154	126	9	63
ANS-100-...	132	14	20	15	9	36	20	57	43	43	50	70	76	96	80	105	65	186	150	9	71



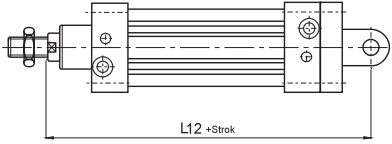
Ayak bağlantı
Foot mounting



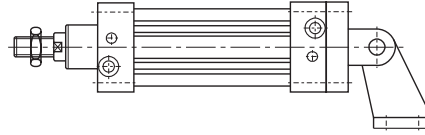
Ön flanş bağlantı
Front flange mounting



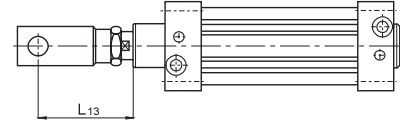
Arka flanş bağlantı
Rear flange mounting



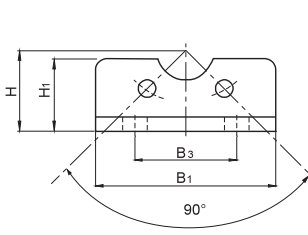
Eklem bağlantı
Swivel flange mounting



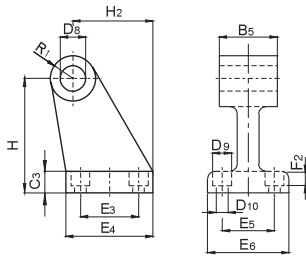
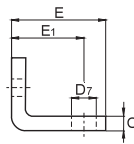
Eklem yer bağlantı
Swivel flange mounting with clevis foot



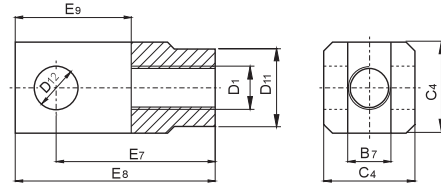
Çatal bağlantı
Piston rod clevis mounting



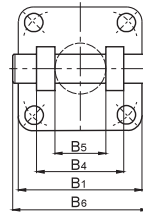
AB: Ayak bağlantı
Foot mounting



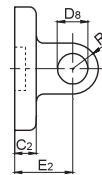
YB: Yer bağlantı
Clevis foot



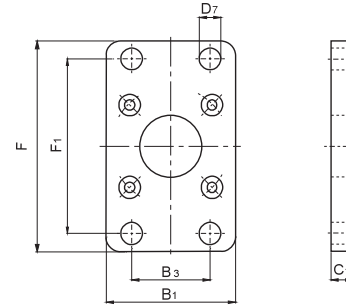
ÇB: Çatal bağlantı
Piston rod clevis mounting



EB: Eklem bağlantı
Swivel flange mounting

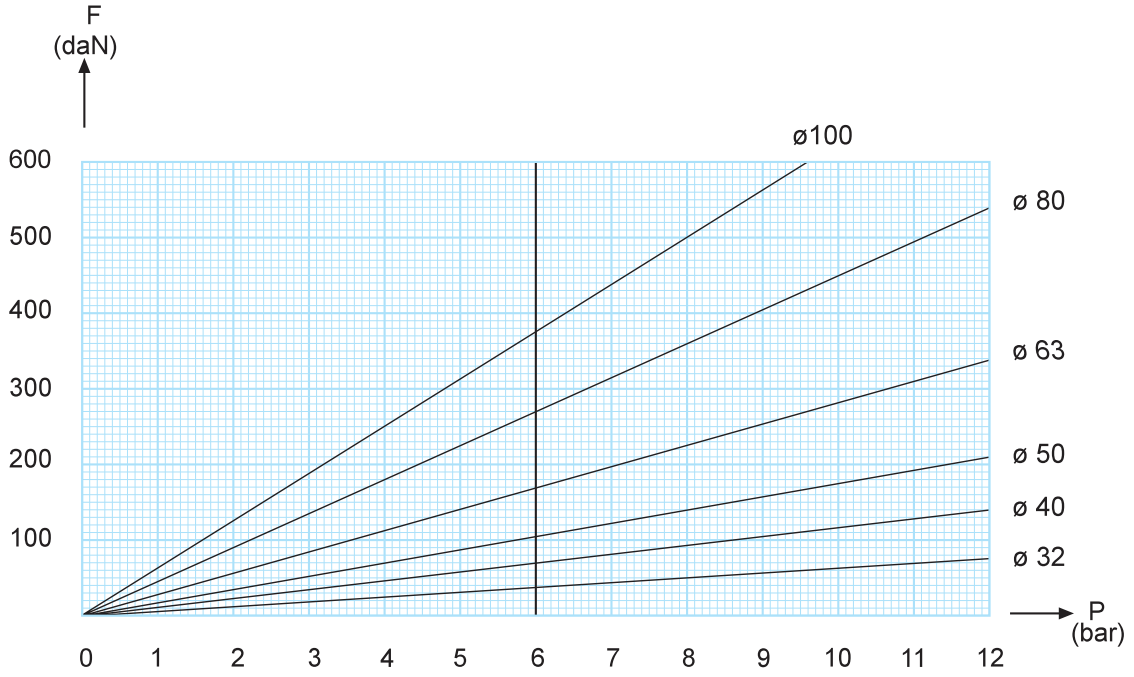


FB: Flanş bağlantı
Flange mounting



	H ₁	H ₂	L	L ₁	L ₂	L ₃	L ₄	L ₅	L ₆	L ₇	L ₈	L ₉	L ₁₀	L ₁₁	L ₁₂	L ₁₃	R	R ₁	SW
ANS-32-...	24	27.5	114	94	16	4	25.5	9	13	5	144	142	16	130	142	56	10	10	10
ANS-40-...	25	30.5	130	105	20	5	23.5	11.5	13	5	163	161	20	145	160	64	13	11	13
ANS-50-...	32	40.5	136	106	25	5	23.5	11.5	13	5	175	170	25	155	170	83	16	13	17
ANS-63-...	36	44.5	149	115	28	6	28.5	14	13	5	190	185	25	170	190	83	18	15	17
ANS-80-...	47	57	164	124	34	6	27.5	14	16.5	6	215	210	30	190	210	103	18	15	22
ANS-100-...	54	65	181	134	40	7	31.5	16	16.5	6	230	220	35	205	230	102	23	19	22

İtme kuvveti / Compression force : (daN)



Ağırlık / Weight : (kg)

Silindir Çapı Piston diameter (Ø mm)	Strok=0 At 0 Stroke (kg)	Her 10 mm. strok için Weight per 10 mm. stroke	AB	FB	EB	YB
32	0.530	0.025	0.120	0.065	0.080	0.060
40	0.840	0.037	0.200	0.087	0.140	0.090
50	1.230	0.047	0.350	0.163	0.208	0.160
63	1.650	0.058	0.540	0.306	0.378	0.210
80	2.715	0.088	1.050	0.558	0.550	0.350
100	3.200	0.145	1.400	0.900	1.070	0.500