



(ISO 1552 STANDARDI)
(ISO 1552 Standard)

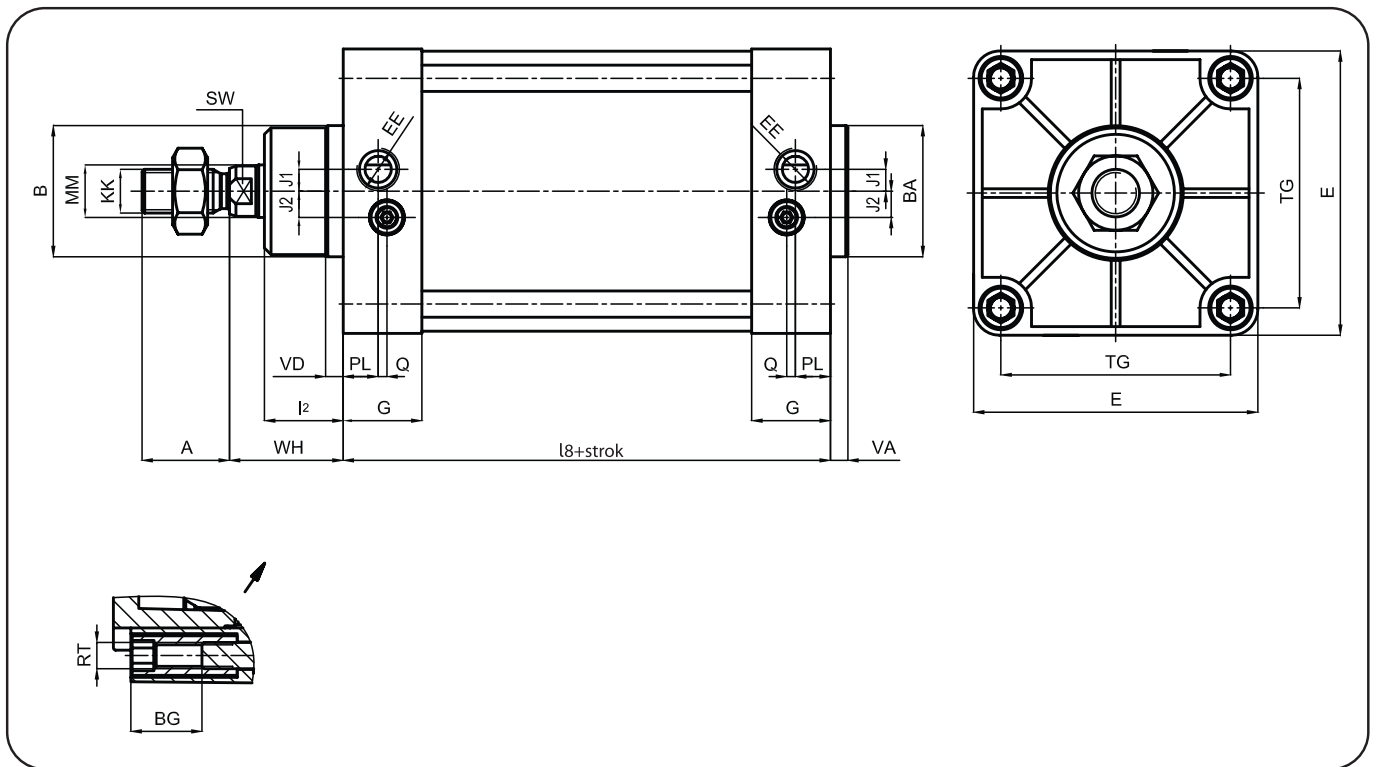


IS

- . . . - . . . - - . - .

Silindir Kodu Cylinder Code	Piston Çapı Piston Diameter	Standart Strok Standard Strokes	Bağlantı Şekli / Mountings	Piston Kolu Malzemesi Piston Rod Material
Çift Etkili / Double acting	125	50, 100, 160, 200, 300, 400, 500	IAB Ayak Bağlantı / Foot mounting	Ck 45 Krom kaplı Ck 45 chrome plated piston rod
Yastıklı Double acting with cushioning	160		IFB Flanş Bağlantı / Flange mounting	S X20Cr13 Krom kaplı X20Cr13 chrome plated piston rod
Manyetik / Magnet	200		IEB Eklem Bağlantı / Swivel flange mounting	
	250		IEYB Eklem Yer Bağlantı Swivel flange mounting with clevis foot	V Viton sızdırmazlık elemanı Viton Seal Çalışma sıcaklığı Temperature Range : -30°C ~ +200°C
		İÇB Çatal Bağlantı / Piston rod clevis mounting		
		IOEB Orta eklem bağlantı Trunnion mounting		

Ölçüler / Dimensions



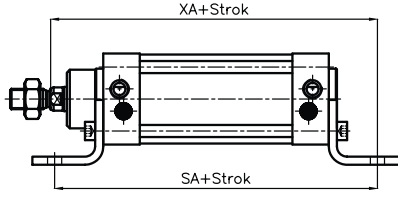
	A	AB H14	AH JS16	AO	AT ±1	AU ±0.2	B/BA d11	BG	BR	BT	CB H14	CD H9	CK H9	CL +0.20 +0.05	CM +0.30	D H11	E	EB	EE	EM -0.5 -1.5
IS - 125-...	54	16.5	90	22	8	45	60	20	22.5	20	70	25	25	25	25	60	140	20	G1/2"	70
IS - 160-...	72	18.5	115	27	9	60	65	24	31.5	25	90	30	30	35	35	65	180	20	G3/4"	90
IS - 200-...	72	24	135	30	12	70	75	24	31.5	30	90	30	30	35	35	75	220	26	G3/4"	90
IS - 250-...	84	28	165	40	20	75	90	25	40	35	110	40	40	40	45	90	270	33	G1"	110

	F	FB H13	FE	FG	FL ±0.2	G	GL JS14	H	HB H13	I2	I8	J1	J2	KK	L	L1	L2	L3 -0.5
IS - 125-...	100	16	32	50	50	45	70	50	14	40	160 ^{±1}	10	20	M27x2	30	7	3.2	10.5
IS - 160-...	144	18	44	72	55	50	97	70	14	55	180 ^{±1.1}	15	15	M36x2	35	7	4	9.5
IS - 200-...	144	18	44	72	60	50	105	70	18	65	180 ^{±1.6}	15	15	M36x2	35	7	4	12.5
IS - 250-...	160	26	50	70	70	60	128	80	22	75	200 ^{±1.6}	25	25	M42x2	45	11	4.5	10.5

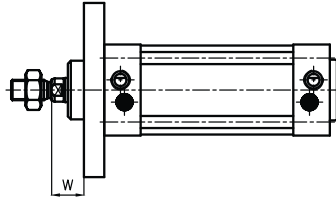
	L4 ±0.5	L7	MF JS14	MM	MR max.	PL	PH JS15	R JS14	RA JS14	RT	R2 H15	Q	SA	SW	TD e9	TE JS14	TF JS14	TG
IS - 125-...	10	80 ⁻²¹	20	32	26	26.5	90	90	60	M12	31.5	5	250 ^{±2}	28	25	94	180	110 ^{±1.1}
IS - 160-...	10	115 ⁻²³	20	40	31	25	115	115	88	M16	32.5	7.5	300 ^{±2}	36	32	118	230	140 ^{±1.1}
IS - 200-...	11	135 ⁻²⁶	25	40	31	25	135	135	90	M16	37.5	9	320 ^{±2}	36	32	122	270	175 ^{±1.1}
IS - 250-...	11	165 ⁻³¹	25	50	41	30	165	165	110	M20	45	10	350 ^{±2}	46	40	150	330	220 ^{±1.5}

	TK	TL h14	TM h14	TR JS14	UB h14	UF	UL	UR	UW	X	XA	XD	XV min.	XV max	VA -1	VD	W ±2.5	WH	ZF ±2
IS - 125-...	40	25	160	90	130	210	124	90	145	333	270 ^{±2}	275 ^{±2}	130	160	6	10	45	65	245
IS - 160-...	48	32	200	115	170	280	156	126	185	417	320 ^{±2}	315 ^{±2}	154	186	6	10	60	80	280
IS - 200-...	48	32	250	135	170	320	162	130	225	432	345 ^{±2}	335 ^{±2}	169	201	6	25	70	95	300
IS - 250-...	65	40	320	165	200	395	200	160	280	486	380 ^{±2}	375 ^{±2}	197.5	212.5	10	25	80	105	330

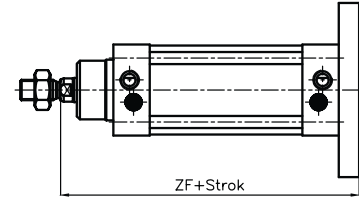
Bağlantı şekilleri / Mountings types



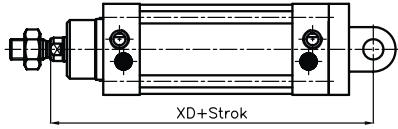
Ayak bağlantı
Foot mounting



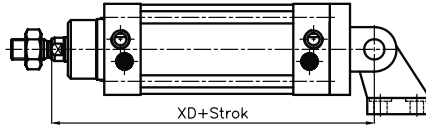
Ön flaş bağlantı
Front flange mounting



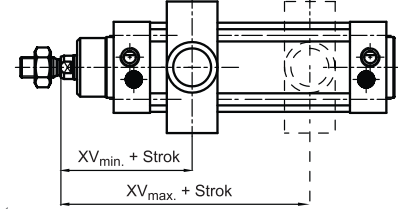
Arka flaş bağlantı
Rear flange mounting



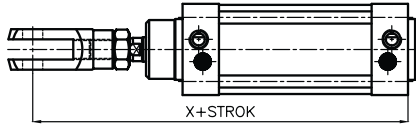
Eklem bağlantı
Swivel flange mounting



Eklem yer bağlantı
Swivel flange mounting with clevis foot

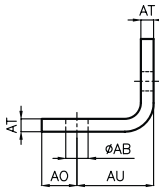


Orta eklem bağlantı
Trunnion mounting

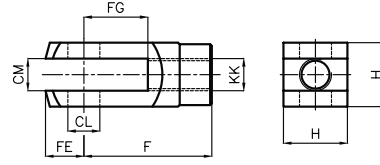
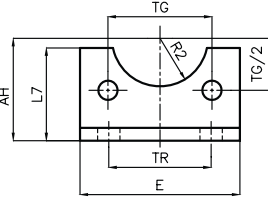


Çatal Bağlantı / Piston rod clevis mounting

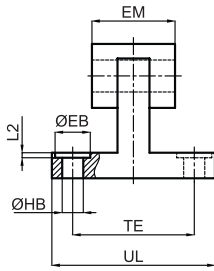
Bağlantı parçaları / Mountings



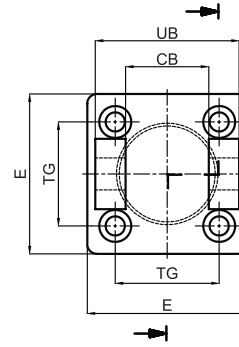
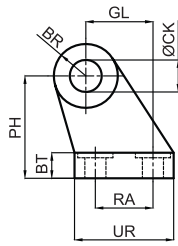
IAB: Ayak bağlantı
Foot mounting



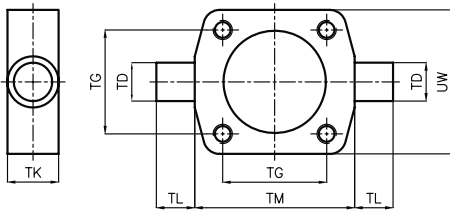
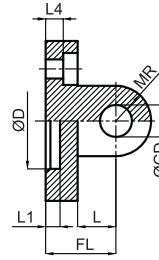
IÇB: Çatal Bağlantı
Piston rod clevis mounting



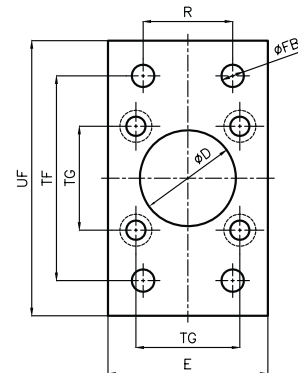
IYB: Yer bağlantı
Clevis foot



IEB: Eklem bağlantı
Swivel flange mounting

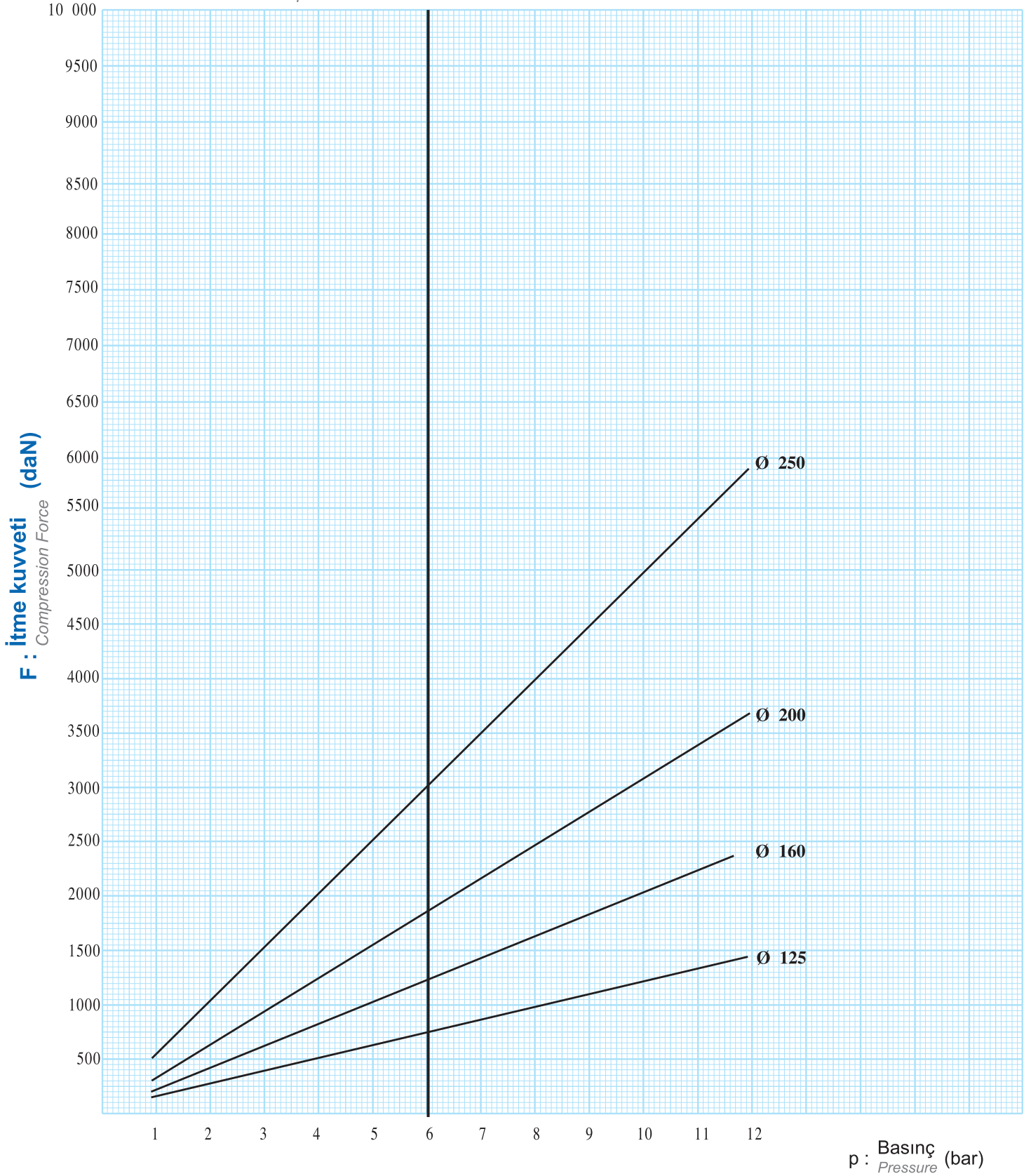


IOEB: Orta eklem bağlantı
Trunnion mounting



IFB: Flaş bağlantı
Flange mounting

İtme kuvveti / Compression Force



Ağırlık / Weight : (kg)

Silindir çapı	Strok=0 da	Her10mm. strok için	IAB	IFB	IEB	IYB	IOEB	IÇB
125	6.000	0.143	2.26	1.38	1.57	1.05	2.72	1.42
160	10.800	0.220	4.90	2.73	2.83	3.00	5.48	3.78
200	14.220	0.250	8.10	4.33	3.72	3.25	7.93	3.78
250	25.828	0.362	13.32	6.50	5.83	5.31	17.86	5.77