

# Hidrolik Silindir (Kompakt)

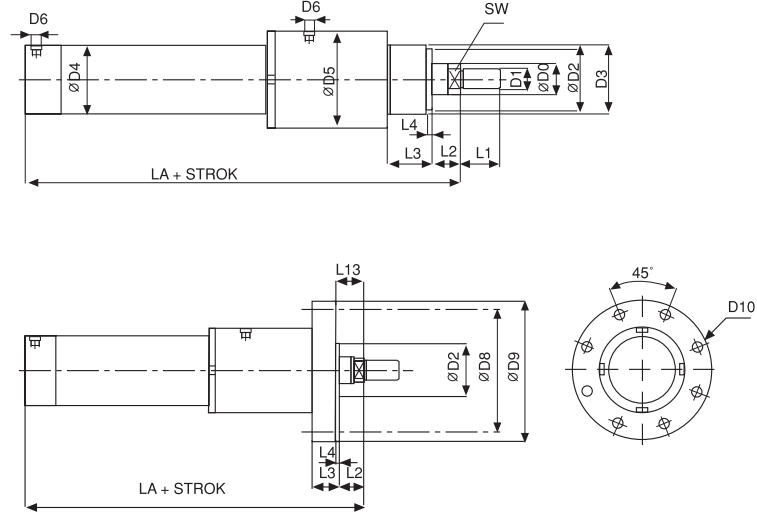
## Hydraulic Cylinder (Compact)

Silindirler / Cylinders

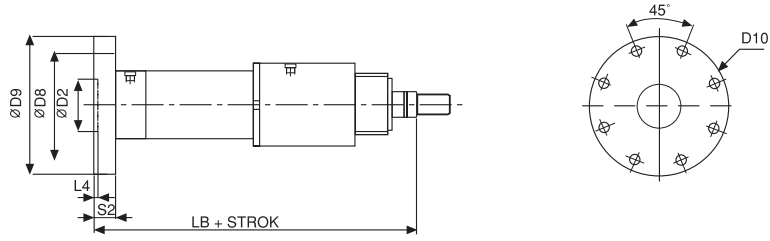


**KHS** - . . . . . / . . . . . - . . . . .

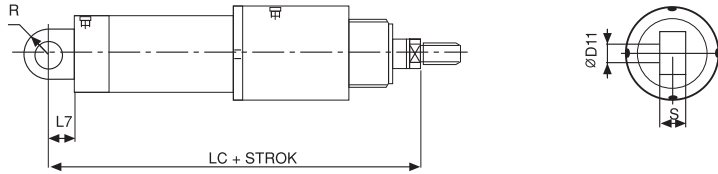
		Strok / Stroke			
		<b>Bağlantı Şekli / Mountings</b>			
		ÖFB	Ön flanş bağlantı / Front flange mounting	RH	Piston mili sertleştirilmiş ve krom kaplı Hardened and chrome plated piston rod
		AFB	Arka flanş bağlantı / Rear flange mounting	RS	Piston mili paslanmaz Stainless steel piston rod
		AEB	Arka eklem bağlantı / Rear swivel flange mounting		Ck 45 Krom kaplı Ck 45 chrome plated piston rod
		AEBK	Küresel arka eklem bağlantı Rear swivel flange mounting with spherical bearing		
		ÖEB	Ön eklem bağlantı / Piston rod swivel mounting		
		ÖEBK	Küresel ön eklem bağlantı Piston rod swivel mounting with spherical bearing		
		OEB	Orta eklem bağlantı / Central trunnion mounting		
		AB	Ayak bağlantı / Foot mounting	SV	Nitril sızdırmazlık elemanı NBR Seal
					Viton sızdırmazlık elemanı Viton Seal
	<b>Piston Çapı</b> Piston Diameter	40, 50, 63, 80, 100, 125, 160, 200			
	<b>Mil Çapı</b> Rod Diameter	22, 28, 36, 45, 56, 70, 90, 110, 140			
<b>Standart / Standard</b>					
<b>Y</b>	<b>Yastıklı</b> with cushioning				




**ÖN FLANŞ BAĞLANTI**  
Front flange mounting

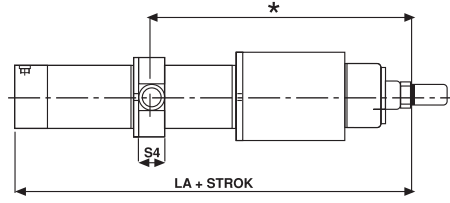


**ARKA FLANŞ BAĞLANTI**  
Rear flange mounting

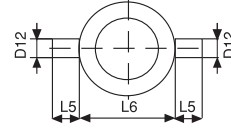


**ARKA EKLEM BAĞLANTI**  
Swivel flange mounting

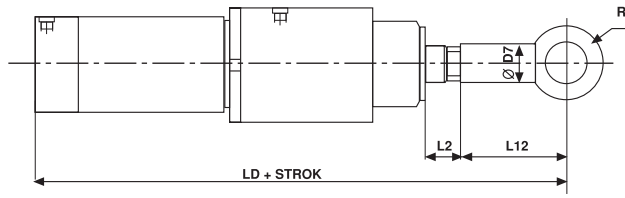
	ØD0	D1	ØD2	D3	ØD4	ØD5	ØD6	ØD7	ØD8	ØD9	ØD10	ØD11	ØD12	ØD13	ØD14	D15	L1	L2	L3	L4	L5
KHS-40	22	M16X1,5	50	M52x1,5	50	67	G 3/8"	25	106	125	9	20	20	11	20	M16x1,5	22	13	19	3	16
	28		60	M62x1,5																	
KHS-50	28	M20X1,5	60	M62x1,5	60	78	G 1/2"	30	126	150	11	25	25	13	25	M20x1,5	28	14	24	4	20
	36		70	M74x2																	
KHS-63	36	M27x2	70	M74x2	75	93	G 3/4"	38	145	175	14	32	32	13	30	M27x2	36	16	29	4	25
	45		85	M90x2																	
KHS-80	45	M33x2	85	M90x2	95	113	G 3/4"	47	165	200	18	40	40	17	40	M33x2	45	18	36	4	32
	56		102	M106x2																	
KHS-100	56	M42x2	106	M112x2	115	138	G 1"	58	200	240	22	50	50	21	50	M42x2	56	20	37	5	40
	70		120	M125x3																	
KHS-125	70	M48x2	132	M136x3	145	173	G 1"	70	235	280	22	63	63	25	60	M48x2	63	23	37	5	50
	90		160	M165x3																	
KHS-160	90	M64x3	160	M165x3	180	218	G 1 1/4"	90	280	330	22	80	80	30	80	M64x3	85	25	41	5	63
	110		190	M200x3																	
KHS-200	110	M80x3	200	M210x3	230	265	G 1 1/4"	110	340	390	26	100	100	33	100	M80x3	95	30	45	5	80
	140		220	M230x3																	



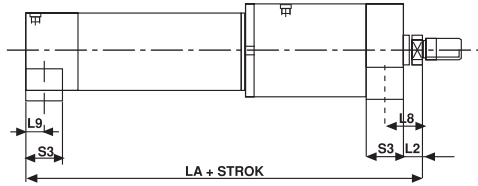
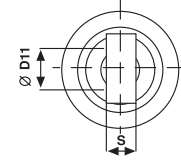
**ORTA EKLEM BAĞLANTI**  
Trunnion mounting



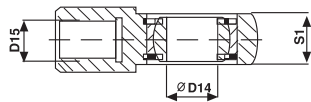
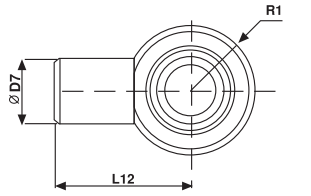
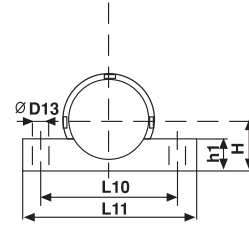
\* Bu ölçü müşteri isteğine ve stroğa bağlı olarak değişir.  
\* This dimension will change according to the stroke and customer needs.



**ÖN EKLEM BAĞLANTI**  
Piston rod swivel mounting

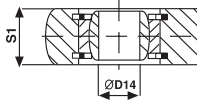
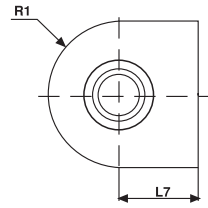


**AYAK BAĞLANTI**  
Foot mounting



**Küresel Ön Eklem Bağlantı**

Piston rod swivel mounting with spherical bearing



**Küresel Arka Eklem Bağlantı**

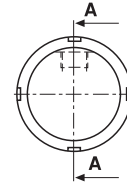
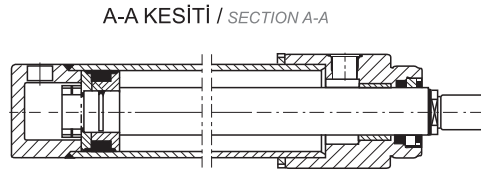
Swivel flange mounting

<b>MPE</b>	L6	L7	L8	L9	L10	L11	L12	L13	LA	LB	LC	LD	H	h1	S	S1	S2	S3	S4	R	R1	SW
<b>KHS-40</b>	90	25	25,5	12,5	105	130	52	16	165	181	190	217	39	24	20	20	16	25	30	20	25	17
																						22
<b>KHS-50</b>	105	32	29	15	125	155	65	18	183	203	215	248	45	28	25	25	20	30	35	25	30	22
																						30
<b>KHS-63</b>	120	40	33,5	17,5	140	170	80	20	208	233	248	288	55	34	32	30	25	35	45	35	35	30
																						36
<b>KHS-80</b>	135	50	38	20	175	215	97	22	221	253	271	318	65	38	40	35	32	40	55	40	45	36
																						46
<b>KHS-100</b>	160	63	42,5	22,5	210	255	120	25	265	297	328	385	80	48	50	40	32	45	65	50	55	46
																						60
<b>KHS-125</b>	195	71	50,5	27,5	250	300	140	28	285	317	356	425	100	58	63	50	32	55	80	60	65	60
																						75
<b>KHS-160</b>	240	90	62,5	37,5	320	380	180	30	327	363	417	507	130	74	80	60	36	75	100	80	85	75
																						100
<b>KHS-200</b>	295	112	77,5	47,5	380	460	210	35	399	439	511	609	160	90	100	74	40	95	115	100	105	100
																						120

## TEKNİK ÖZELLİKLER / TECHNICAL SPECIFICATIONS

ÇALIŞMA BASINCI <i>Operating Pressure</i>	: 160 BAR, 250BAR (İSTEĞE BAĞLI) <i>(Optional)</i>	MAX. PİSTON HIZI <i>Max. Piston speed</i>	: 0.5 m/s
STANDART STROKLAR <i>Standard stroke</i>	: 50, 100, 160, 200, 300, 400, 500	ÇALIŞMA SICAKLIĞI <i>Operating temperature</i>	: Min.-20°C Max.+80°C
AKIŞKAN TÜRÜ <i>Fluid Type</i>	: MINERAL YAĞLAR <i>Mineral oils</i>	VİZKOZİTE / <i>Viscosity</i>	: 5 Cst - 300 Cst
SIZDIRMAZLIK ELEMANLARI <i>Seals</i>	: NBR + PU	SİLİNDİR BORUSU <i>Cylinder tube</i>	: St 52 BK + S HONLANMIŞ <i>St 52 BK + Honed</i>
PİSTON MİLİ / <i>Piston rod</i>	: Ck 45 KROM KAPLI / <i>Ck 45 Chrome plated</i>		

### KHS (Kompakt Hidrolik Silindir) *(Compact Hydraulic Cylinder)*



### KHS - Y (Kompakt Hidrolik Silindir Yastıklı) *(Compact Hydraulic Cylinder with cushioning)*

